

A New Record of *Cneoscelis pulla* from Japan (Coleoptera, Tenebrionidae)

Kiyoshi ANDO

Entomological Laboratory, College of Agriculture, Ehime University
5–7, Tarumi 3 chôme, Matsuyama, Ehime, 790–8566 Japan

The species of *Cneoscelis pulla* (ERICHSON, 1843) has so far been known from the Oriental Region (except Japan) to Africa, and New Caledonia, although its distributional areas are absolutely irregular. I found this species from Japan in my cabinet, and will propose the new distributional record hereinafter.

Cneoscelis pulla (ERICHSON, 1843)

Uloma pulla ERICHSON, 1843: 253. Type locality: Angola.

Eutochia tibialis WOLLASTON, 1867: 180. Type locality: Cape Verde Archipelago: S. Iago, et Brava [Cape Verde].

Alphitobius distinguendus FAIRMAIRE, 1869: 230. Type locality: Île Mayotte, dans les Comores.

Specimen examined. 1 ♂, Sankyô-Rindô, Tokunoshima Island, Japan, 20–27.VI.2006, M. TANAKA leg. (ANDO Coll.)

Distribution. Oriental Region; Taiwan; Japan (new record); New Caledonia; Yemen; Saudi Arabia; Mauritius; Africa.

Notes. This species is very similar to *Cneoscelis atra* (PIC, 1926) in having the distinctly bent and strongly tumid male protibiae, but readily separable from the latter by the inner margins of male protibiae are distinctly and roundly emarginate at bent corners while those in the latter are scarcely emarginate.

References

ERICHSON, W. F., 1843. Beitrag zur Insecten-Fauna von Angola, in besonderer Beziehung zur geographischen Verbreitung der Insecten in Africa. *Archiv für Naturgeschichte*, **9** (1): 199–267.

FAIRMAIRE, L., 1869. Notes sur les coléoptères recueillis par Charles COQUEREL à Madagascar et sur les côtes d'Afrique. *Annales de la Société Entomologique de France*, 4^e série, **9**: 179–260.

WOLLASTON, T. V., 1867. Coleoptera Hesperidum, Being an Enumeration of the Coleopterous Insects of the Cape Verde Archipelago. xxxix + 285 pp. John van Voorst, London.

Manuscript received 28 February 2016;
revised and accepted 15 March 2016.

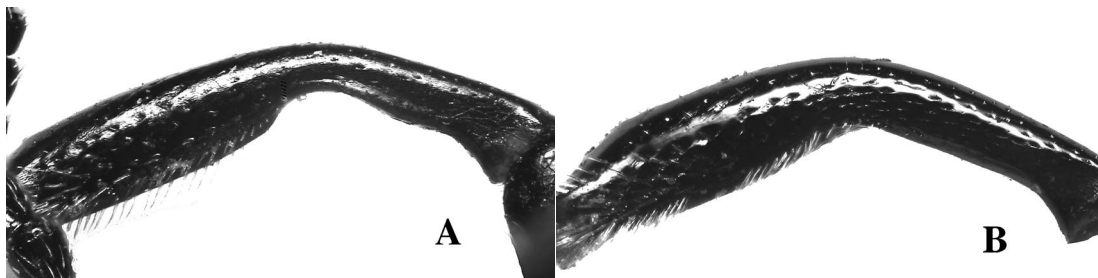


Fig. 1. Right tibiae of *Cneoscelis* spp. — A, *C. pulla* (ERICHSON, 1843); B, *C. atra* (PIC, 1926).